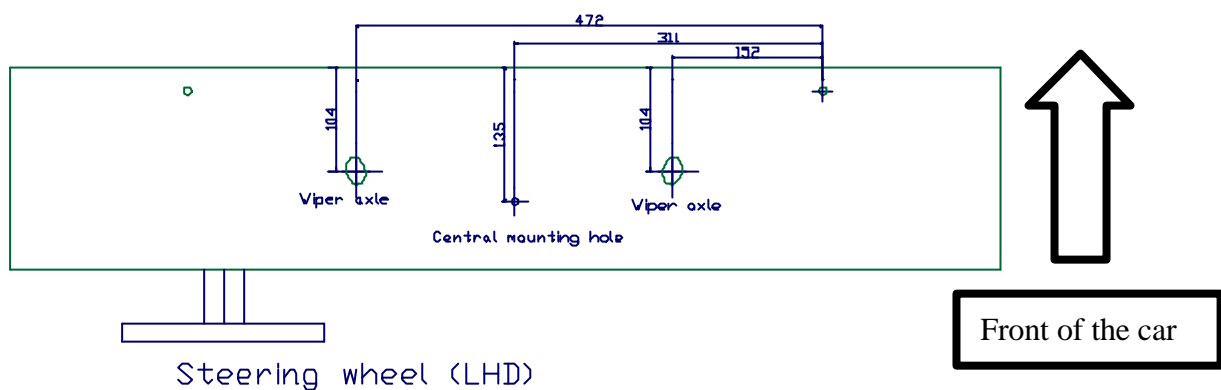


Mounting instructions high windscreen Burton.

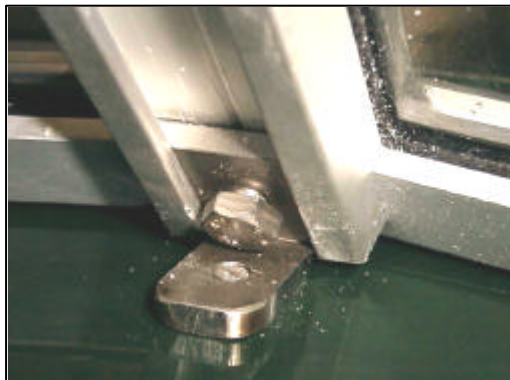
The high windscreen is delivered as a complete package and consists of the following parts:

- Windscreen frame with mounted glass and rubbers
- 2 Triangular side mounts with rubber inlay
- Mounting bracket for inside mirror
- Central mounting bracket for windscreen to the body
- Nuts and bolts
- Rubber protection plug for central pillar

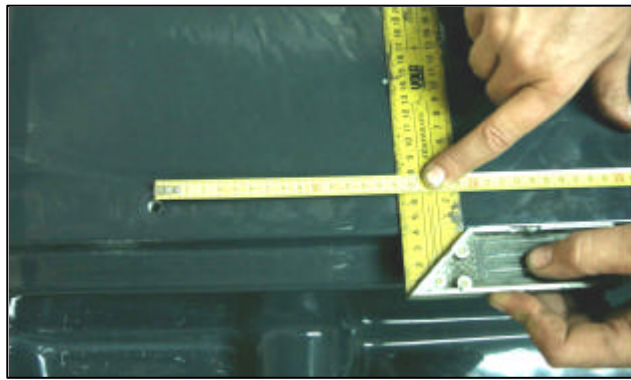
To mount the high windscreen on the body, five holes have to be drilled in the polyester. In the middle the windscreen is mounted using a bracket that slides into the middle bar. This bracket is fixed using a short M6 bolt. Mark the position of the hole for this bolt measuring the distances from the hole for the right bonnet hinge:



Position of mounting holes



Central mounting bracket.



Measuring the position of the mounting holes.

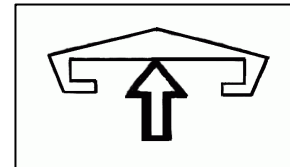
Drill a 6.5 mm hole in the right position through the body. Slide the central mounting bracket into the central pillar of the windscreen. Fix the bracket in its position (temporarily) using a short M6 bolt. Fix the triangular side mounts to the windscreen using the screws supplied. Remove the rubber from the underside of the windscreen frame. Place the complete windscreen on the body. Fix it in place using a long M6 bolt from the inside of the body. Press the windscreen down by hand to make sure the windscreen follows the contour of the body and then drill the holes (5,5 mm) for the triangular side mounts. Remove the windscreen and place the rubber in the underside of the frame. Mount the windscreen using all five bolts. Use a washer and lock nut on the inside for the side mounts.

Make sure that the distance between the lower ridge behind the bench and the top of the central windscreen pillar (on the inside of the profile, see picture) is 770 mm. This distance is very important if you want to fit the hardtop later. If the distance is not correct, drill the holes for the side mounts slightly bigger, so you have some free play. If the right distance is set, fasten the screws and bolts.



Distance between windscreen and edge of the body.

To mount the central mirror, remove the mirror from the bracket. Put an M6 nut on the end of the mirror. Screw the mirror into the bracket supplied in the package. Slide the bracket into the central pillar of the windscreen and fasten it with a short M6 bolt. Place the rubber protection plug in the central pillar. To mount the side mirror(s), drill an 8.5 mm hole in the side mounts of the windscreen. Determine the position of the hole by sitting in the driver seat and to see if the mirrors are clearly visible. If you want to mount the hardtop later, be sure to leave at least 2 cms free space from the vertical edge of the side mounts.



Mounting the Burton wiper system

The wiper system was developed specifically for the high windscreen for the Burton. It uses the original 2CV wiper motor.

Drill the 2 holes according to the drawing using a 16mm drill. Disassemble the wiper system. Remove the clips and washers from the wiper axles. Now remove the axle, be careful not to lose the curved washer. Unscrew the nut on the inside and remove the axle-guide and the chamfered adapter. Mount the stainless steel plate (using the bolt under the central windscreen pillar) to make sure everything fits. Use a file to make the holes larger, until the axle guides fit through the body.



Windscreen wiper bent to shape



Wiper assembly in parts

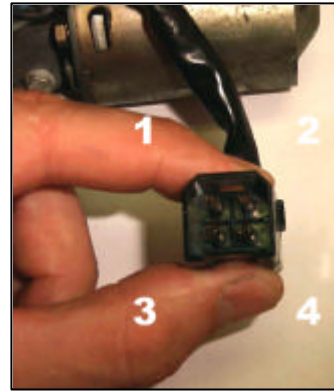
When the axle guide falls neatly in the hole, fix the axle guide and chamfered adapter. Use some sealing kit make sure the body stays leak proof. Bend the wiper blades, using a bench vice, so they are parallel to the bottom of the windscreen frame (see picture). Also, make sure the wiper blade is at a right (90 degree) angle to the surface of the windscreen.

Connecting the wiper motor:

To connect the wiper motor you can either use the normal contra connector from the donor 2CV or you cut the wires and use new connections.

The connections are as follows:

- | | |
|---------------|-------------------------------|
| 1. Black Wire | Ground |
| 2. Grey Wire | To white connection on switch |
| 3. White wire | To blue connection on switch |
| 4. Blue wire | + 12 Volt (contact) |

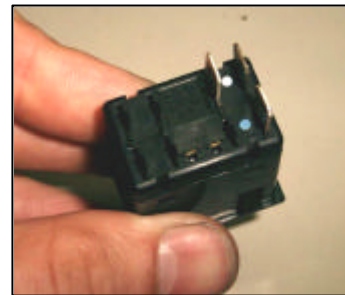


Wiper motor connections

Windscreen wiper switch:

The original wiper switch has 3 connections, recognisable through a coloured dot:

- | | |
|---------------------|-----------------------------|
| White: | Connection 2 on wiper motor |
| Blue: | Connection 3 on wiper motor |
| Black (not marked): | + 12V (contact) |



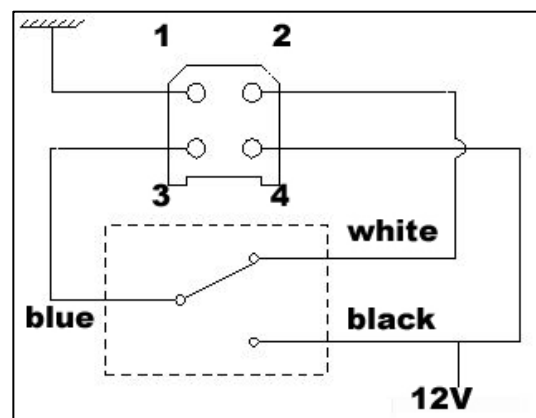
Wiper switch from donor 2CV.

If you want to use another type of switch, then make sure you use an on-on switch. The connections are shown in the picture.

The windscreen washer

The washer system for the Burton consists of the following parts: a reservoir with pump, a spray head, a switch and hoses. Use the spray head with two openings to mount on the Burton. Drill a hole Ø6.5 mm through the body. Mark the position of the hole directly in front of the central windscreen pillar. Mount the spray head as far as possible to the front of the car. Watch out for any instruments or cables under the dashboard! Use one of the metal clamps to secure the spray head.

Remove the brace from the reservoir. Choose a suitable position against the bulkhead to place the reservoir. Make sure the electrical cables are long enough to reach the switch. Mark the positions of the top and bottom holes. Drill the two holes with a 4.5 mm drill. Use two M4 bolts to fasten the reservoir.



Connecting the wiper motor and switch.

Make a hole Ø26 mm in the dashboard for the washer button. Fasten the switch, using the plastic nut supplied, from the back of the dashboard. Connect the black wire with the two connectors between the switch and the + connection on the pump. Connect the brown wire between the - connection of the pump and earth. Finally, connect the second black wire between the switch and 12V. If you want you can place a (floating) fuse of 4A in this wire. Connect the hose between the pump and the spray head. You can adjust the direction of the heads by inserting a needle in the opening and turning it.